

Switches NOTEBOOK **A**



Switches

COMERCIAL
tecasa

//TW Metalflex

DESCRIPTION, APPLICATION AND TECHNICAL DATA FOR SWITCHES PUSH-BUTTONS AND SETS FROM NOTEBOOK A

A4 PUSH-BUTTONS HL-404, HL-408 AND LAMPHOLDER WITH SWITCH SG-420

Intended for low current switching in household appliances.

Normally closed, normally open and switch-over circuits by HL-404, normally closed circuits by HL-408 and normally closed as well as switch-over circuits available by SG-420.

A5 PUSH-BUTTON SWITCHES PS-310 AND MOUNTING SUPPORT PS-312

Intended for household appliances.

Single and double pole versions available.

A6 PUSH-BUTTON SWITCHES PS-331

Intended for household appliances.

Single pole version. The additional plastic adapter, available in various colours and forms, allows the mounting from the front side of the appliance.

A7 GAS IGNITION SWITCHES SV-396, RS-395

Particularly intended for use as the spark ignition push-button on the cooking plates.

Linear or rotational movement of the actuating button, depending on the model.

Splash-proof construction.

A8 SETS PL-330

Intended for use in deep-freezers and refrigerators.

Sets with push-button continuous-freezing switch and with or without ON-OFF switch on the regulation knob of the thermostat. The versions with 2 or 3 signal lamps or LEDs available.

Splash-proof construction. The removable front panel allows different aesthetics or colours to be implemented.

Method of mounting: from the front side of the panel.

A9 SETS PL-333

Intended for use in deep-freezers and refrigerators. Contain push-button continuous-freezing switch and two or three signal lamps or LEDs. These sets are installed from the internal side of the appliance.

A10 SETS PL-334

Intended for use in deep freezers and refrigerators. Sets with two or three switches available.

Two or three signal lamps can be included: green lamp for mains-on indication, yellow lamp for continuous freezing indication and red lamp for alarm of too high temperature. Audible alarm of too high temperature.

Method of mounting: from the rear side of the panel. Rast 5 connection.

A11 SETS PL-336

Intended for use in deep freezers and refrigerators.

Contain push-button continuous-freezing switch and up to four signal lamps or LEDs.

Method of mounting: from the rear side of the panel. Electrical connection by fast-on terminals.

A12 SETS PL-332

Intended for use in deep-freezers and refrigerators. Contain push-button continuous-freezing switch and two or three signal lamps or LEDs. These sets are installed from the external side of the appliance. Rast5 connection.

PUSH-BUTTON HL-404

CUT OUT FOR FIXING
E, E2, F2



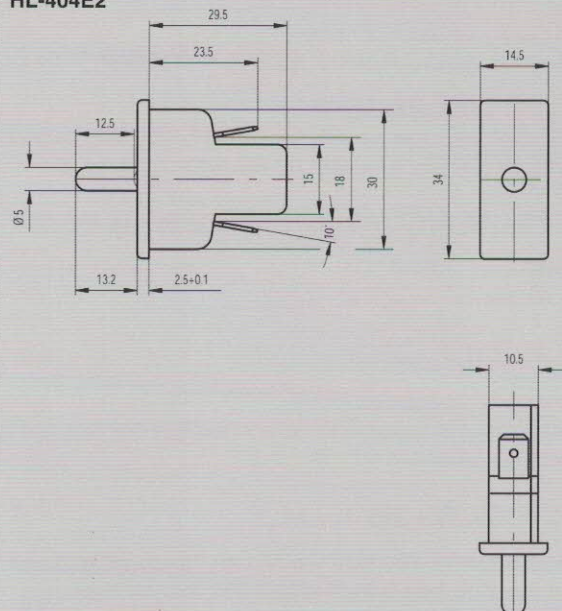
CUT OUT FOR FIXING
G



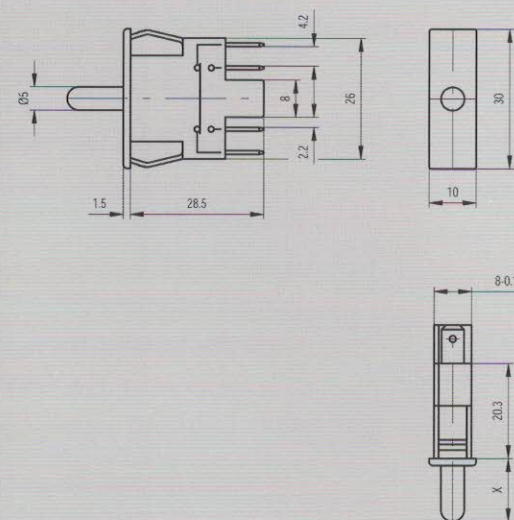
CUT OUT FOR FIXING
H



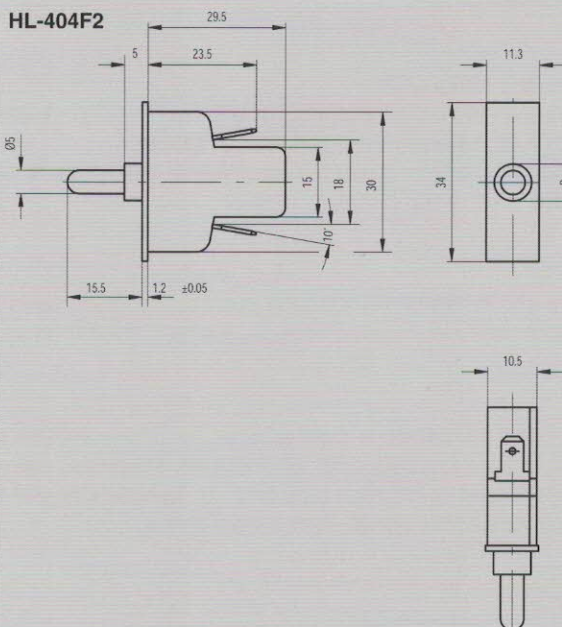
HL-404E2



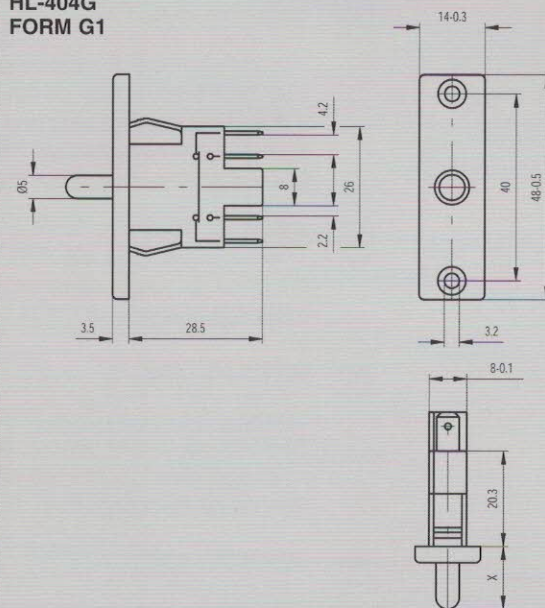
HL-404G FORM G



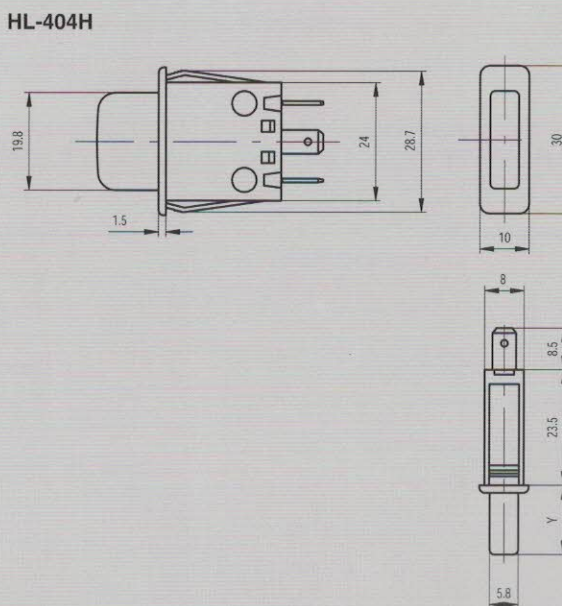
HL-404F2



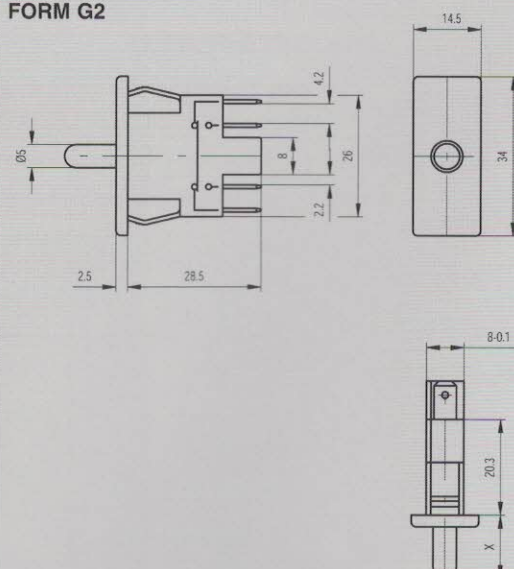
HL-404G FORM G1



HL-404H

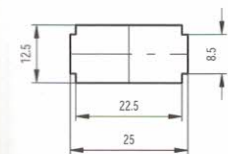


HL-404G FORM G2

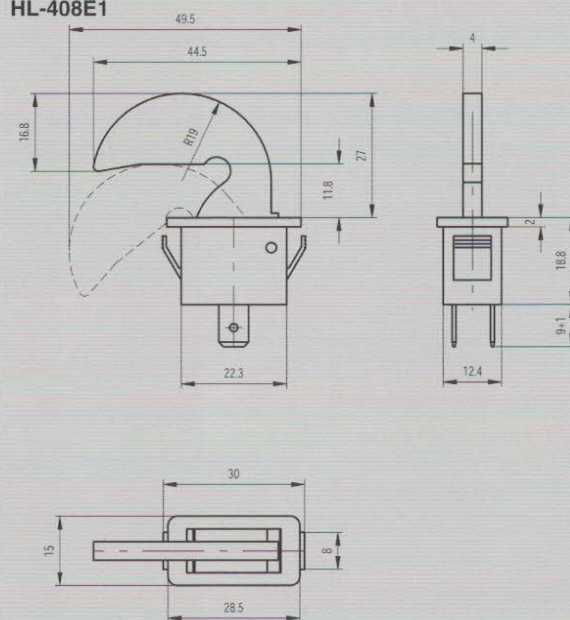


PUSH-BUTTON HL-408

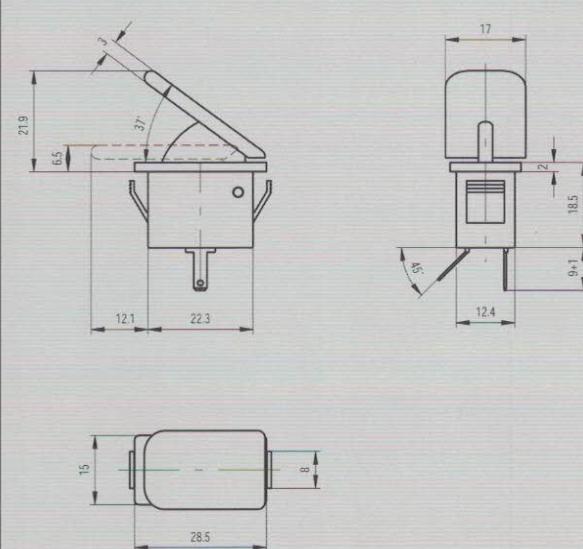
CUT OUT FOR FIXING



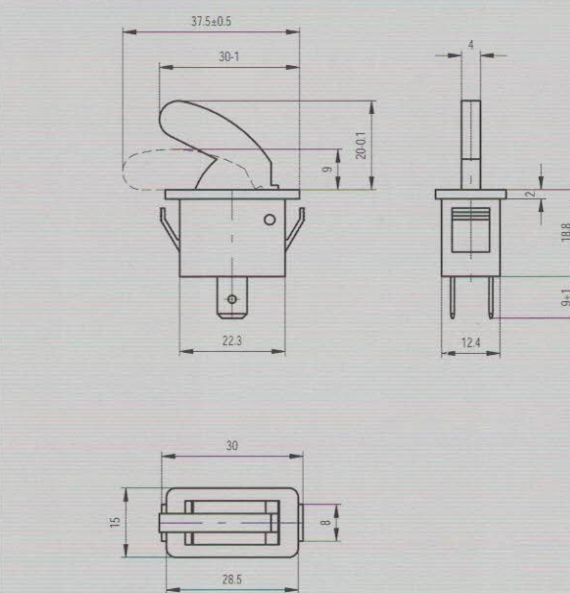
HL-408E1



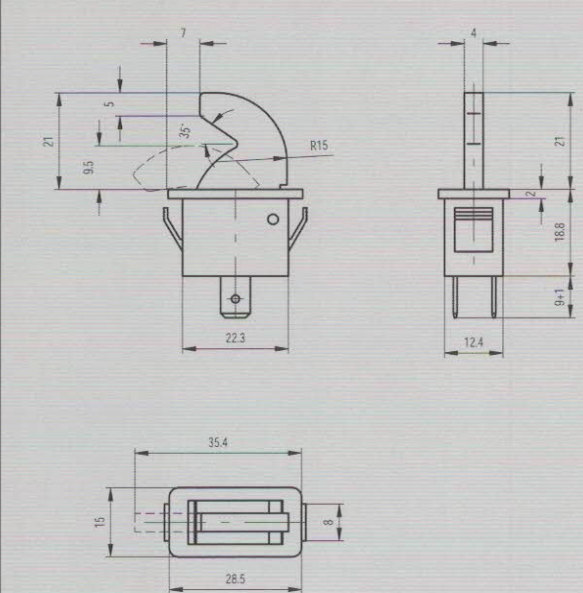
HL-408M1



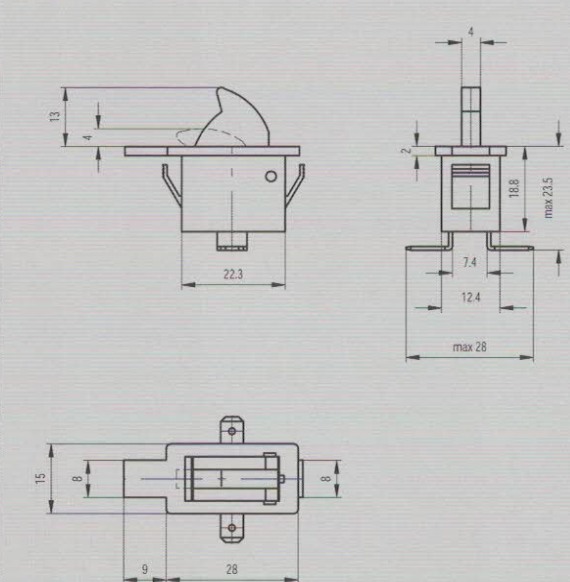
HL-408G3



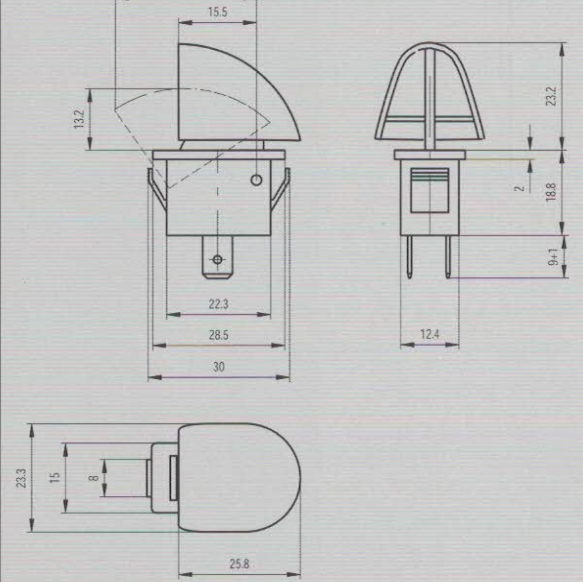
HL-408G8



HL-408H1

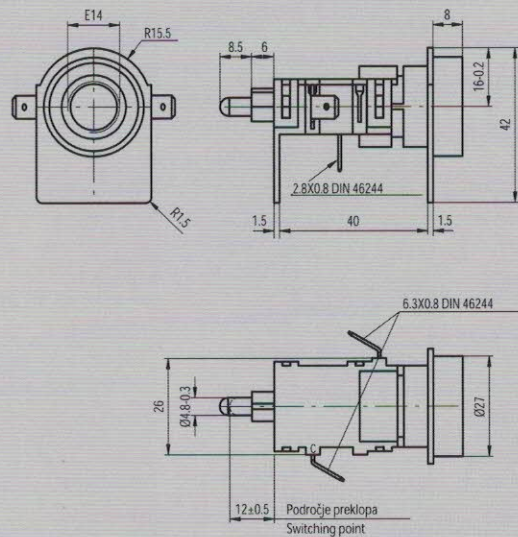


HL-408K1

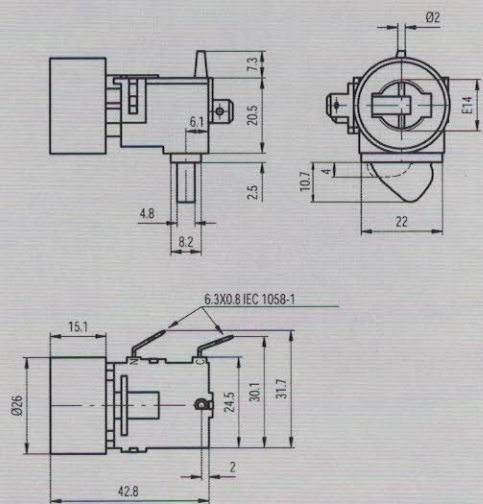


LAMPHOLDER WITH
SWITCH
SG-420

SG-420XA




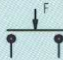
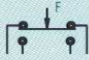
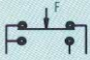

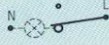


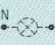
SG-420XB



TECHNICAL DATA

0.5 / 250 ~ T 85/55 5E4	0.25(0.1) / 250 ~ 0.5(0.2) / 120 ~ 5E4	0.2(0.1) / 250 ~ μ T90 1E5	0.2 / 250 ~ T85 / 55 1E5	120, 250 V ~ 25W max 1E4
HL-404A,B,E,F,HL-408	HL-404GM, GD, GI, GS	HL-404H	HL-408M1	SG-420

CIRCUIT DIAGRAM

 DIAGRAM: M X: 18, 15.7, 13.5, 12.5, 11.5, Y: 14, 23.4	 DIAGRAM: D X: 27.5, 23.5, 20.4, 16.6, 14.5, 13.3	 DIAGRAM: I X: 26.6, 22.7, 19.5, 15.7, 13.4, 12.4	 DIAGRAM: S X: 26.6, 22.7, 19.5, 15.7, 13.4, 12.4 Y: 14, 23.5	
HL-404, HL-404G, M, HL-408	HL-404G	HL-404G	HL-404G, HL-404H	
 SG-420A	 SG-420B	 SG-420E	 SG-420G	 SG-420I

COLOUR OF HOUSING

WHITE	BLACK	OTHER							

COLOUR OF BUTTON

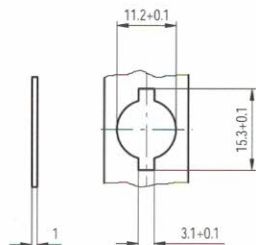
WHITE	BLACK	OTHER							

TERMINALS: TABS 6.3 x 0.8 (IEC1058), TABS 4.8 x 0.8 (IEC1058), TABS 2.8 x 0.8 (0.5) (IEC1058)
APPROVALS: ENEC, VDE HL-404GM, GD, GI, GS, UL (SG-420AA)

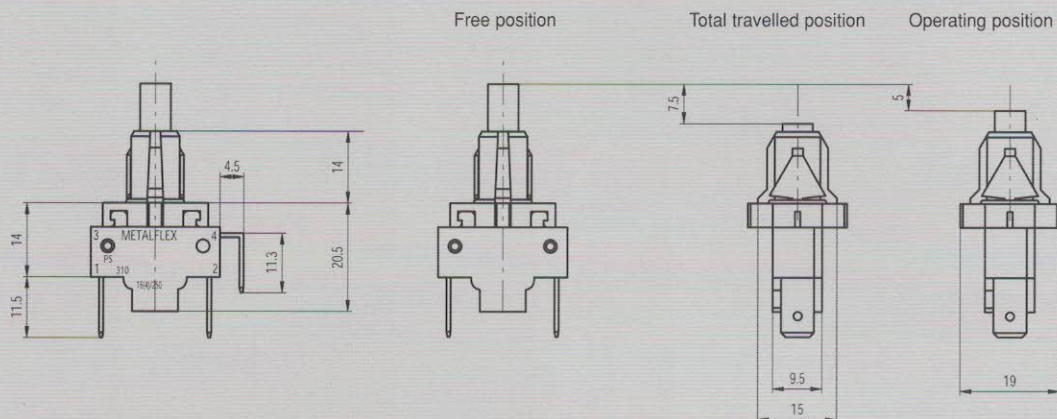
ORDER DATA:

- Circuit diagram
- Colour of housing and button
- Annual consume

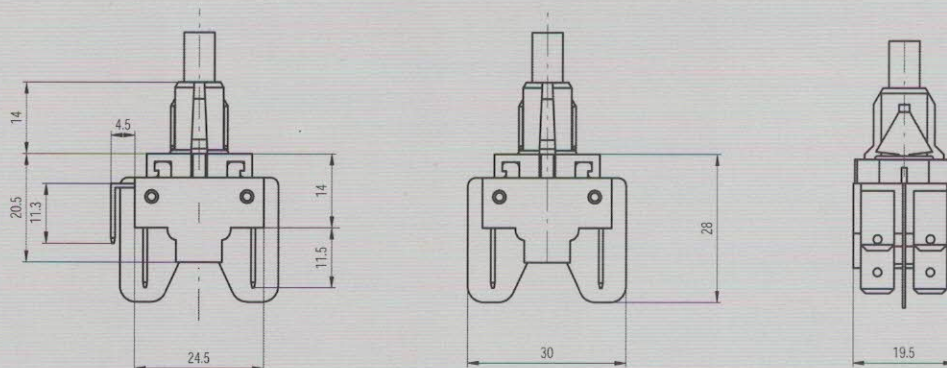
CUT OUT FOR FIXING



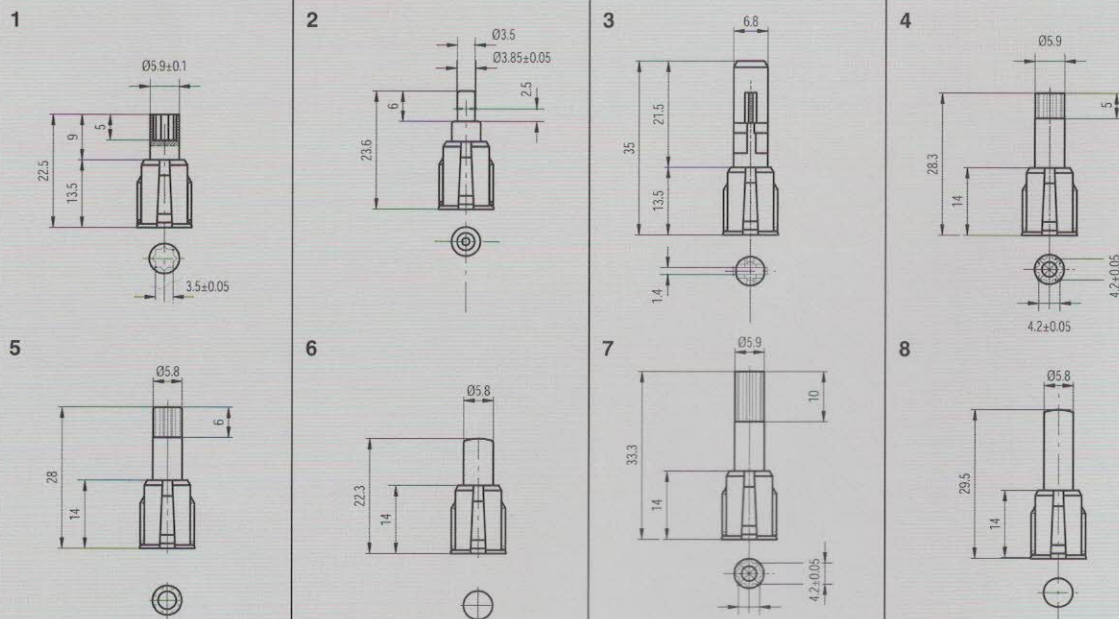
SINGLE POLE



DOUBLE POLE

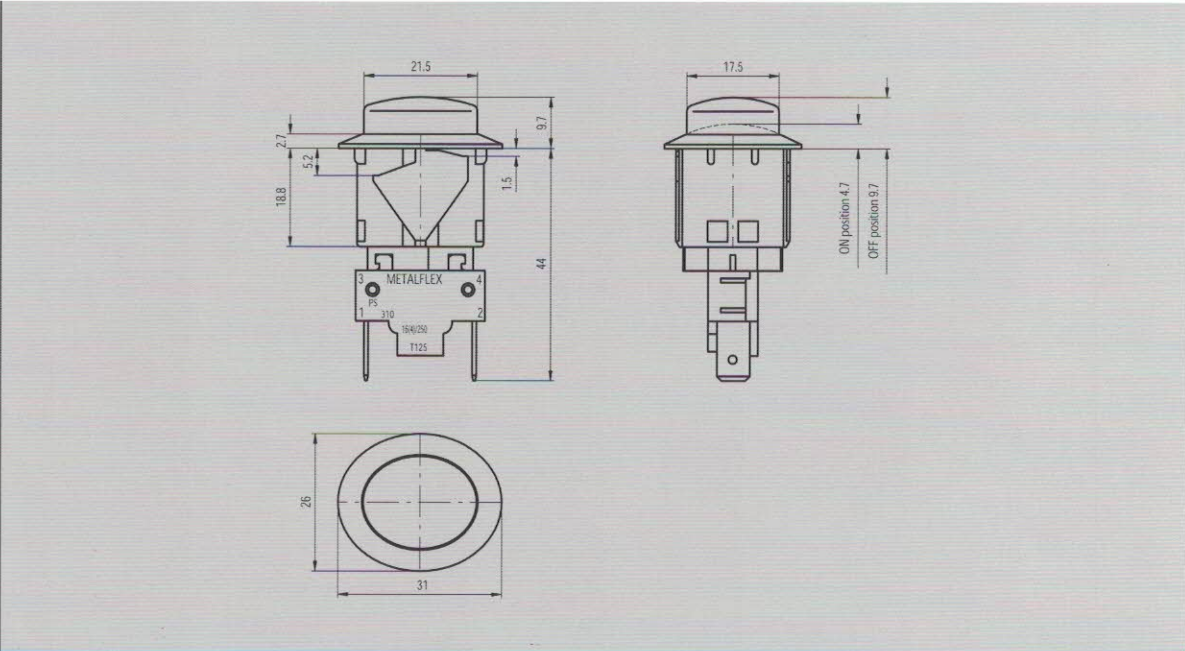
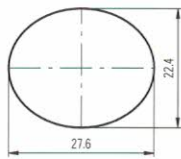


PUSH BUTTON



MOUNTING SUPPORT
PS-312

CUT OUT FOR FIXING



TECHNICAL DATA

16(4) / 250 - T 125 PTI 250				
MIN. LIFE ENDURANCE 10.000 CYCLES				

CIRCUIT DIAGRAMS

--	--	--	--	--	--	--	--	--	--

TYPE

SWITCHES
PUSH BUTTON

310A-A	310A-C	310A-E	310C-A	310C-D	310C-G	310C-Z	310C-I	310C-M	
310B-A	310B-C	310B-E	310D-A	310D-D	310D-G	310D-Z	310D-I	310D-M	

CONTACT GAP

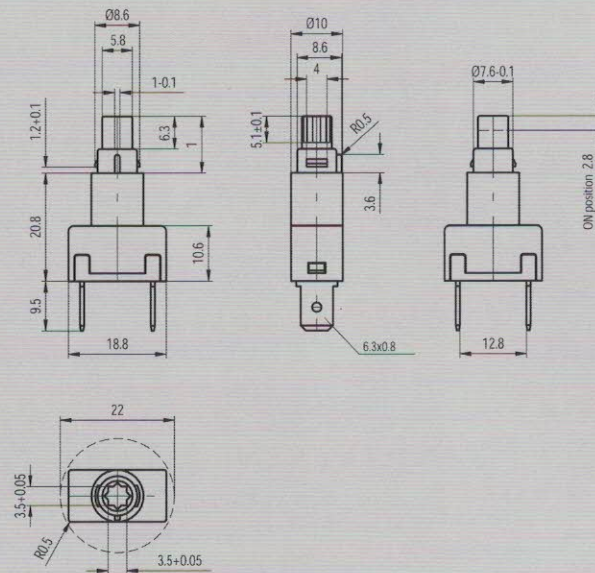
>3	>3	μ	>3	>3	μ	>3	μ	μ	
----	----	-------	----	----	-------	----	-------	-------	--

TERMINALS: TABS 6.3 x 0.8 (IEC 1058)
APPROVALS: VDE

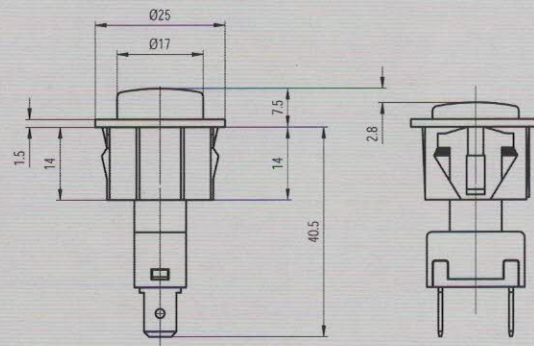
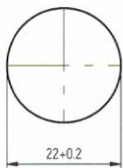
ORDER DATA:

- Circuit diagram
- Push button form
- Annual consume

SINGLE POLE




CUT OUT FOR FIXING



TECHNICAL DATA

4(2) / 250 ~ T 125 PTI 250 MIN. LIFE ENDURANCE 10.000 CYCLES									

CIRCUIT DIAGRAMS

TYPE

SWITCHES
PUSH BUTTONS

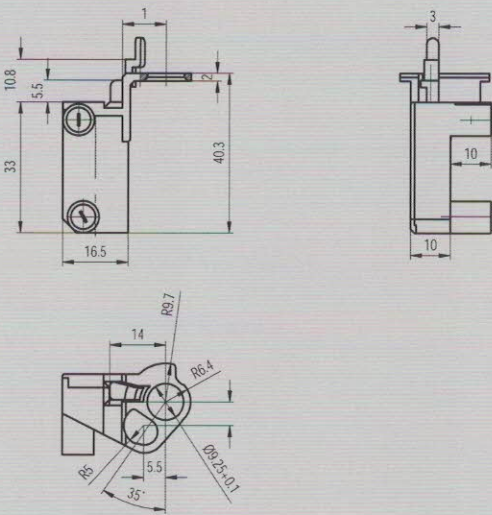
331A									
331B									

TERMINALS: TABS 6.3 x 0.8 (EN 61058)
APPROVALS: VDE

ORDER DATA:

- Push button form
- Annual consume

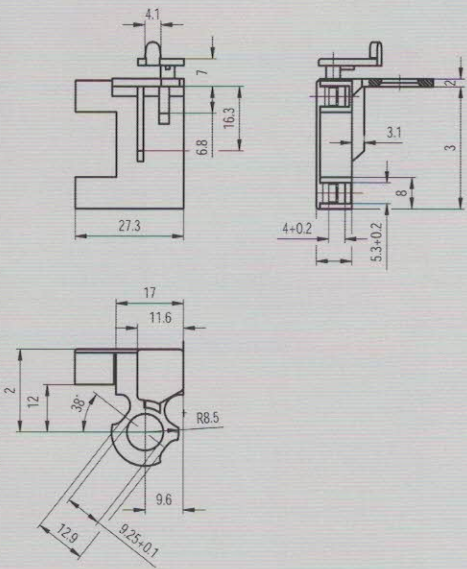
SV-396H1



EXTERNAL DIAMETER
FOR FIXING

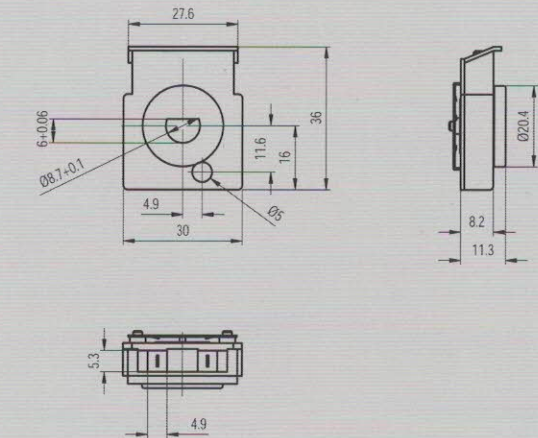


SV-396G1



ROTARY SWITCH
RS-395

RS-395A



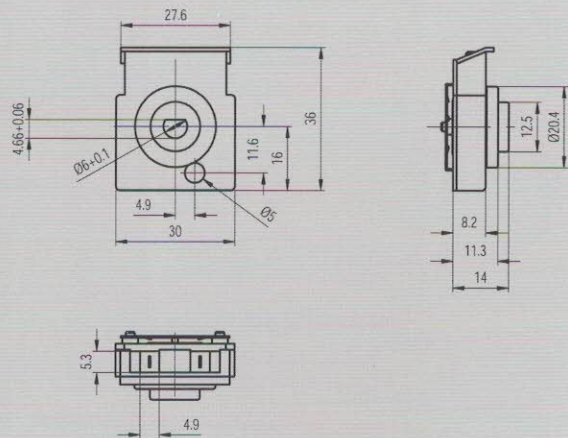
EXTERNAL DIAMETER
FOR FIXING A



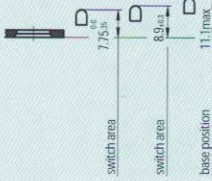
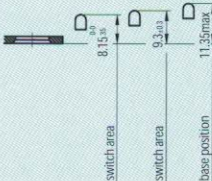
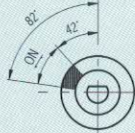
EXTERNAL DIAMETER
FOR FIXING E



RS-395E



TECHNICAL DATA	0.005 / 250 ~ T 125° 5E4	0.005 / 250 ~ T 130 1E5	0.005 / 250 ~ T 130 5E4		
	SV-396H	SV-396G	RS-395E, RS-395A		

CIRCUIT DIAGRAM					
	SV-396H	SV-396G	RS-395E, RS-395A		

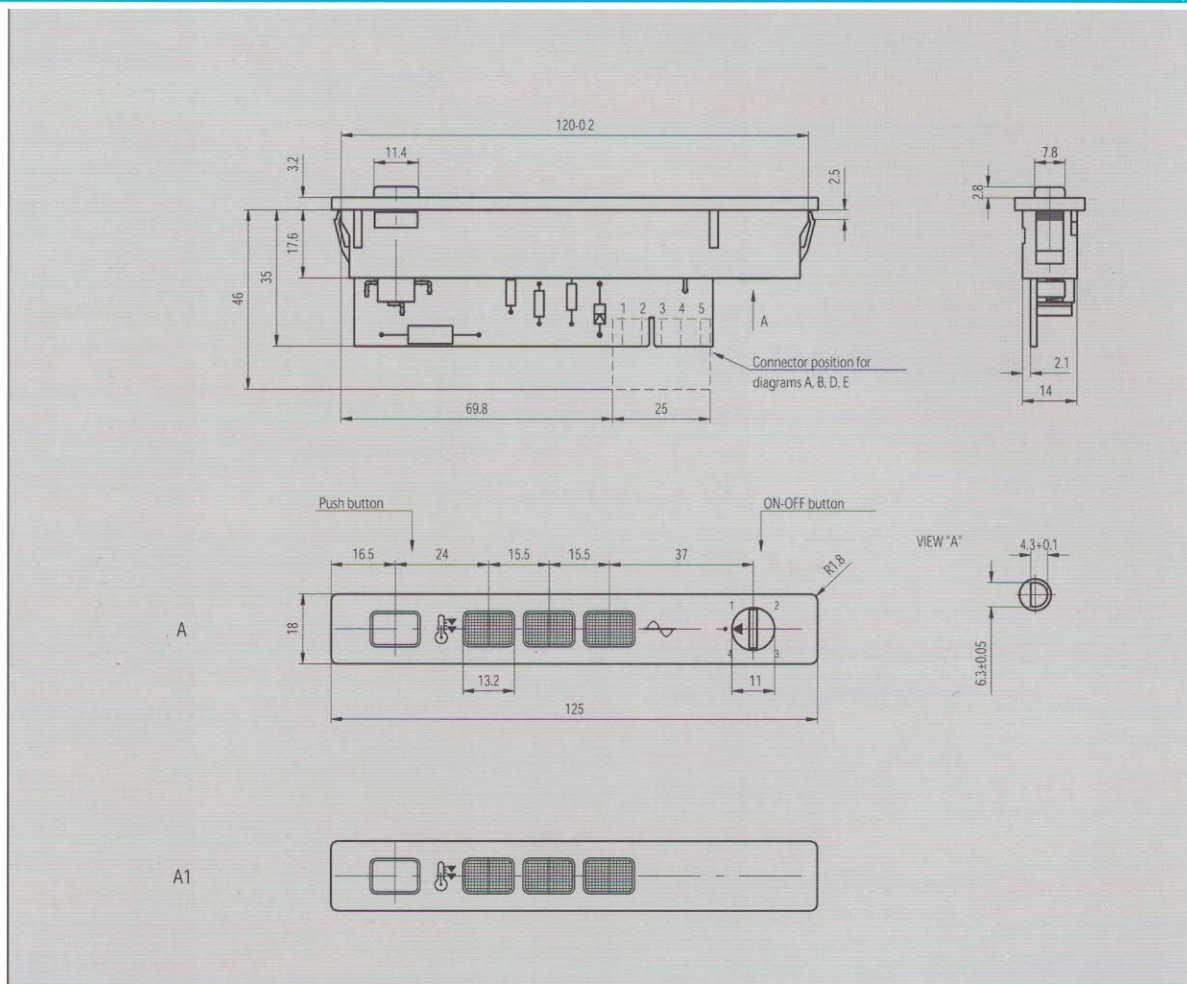
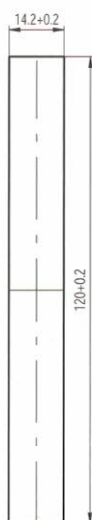
COLOUR OF HOUSING	BLACK				
	SV-396, RS-395				

COLOUR OF BUTTON	BLACK				
	SV-396, RS-395				

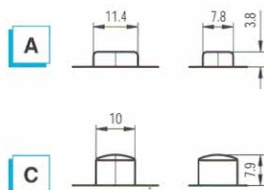
TERMINALS: TABS 2.8 x 0.5 (IEC 1058)
 APPROVALS: ENEC

- ORDER DATA:
- Colour of housing and button
 - Annual consume

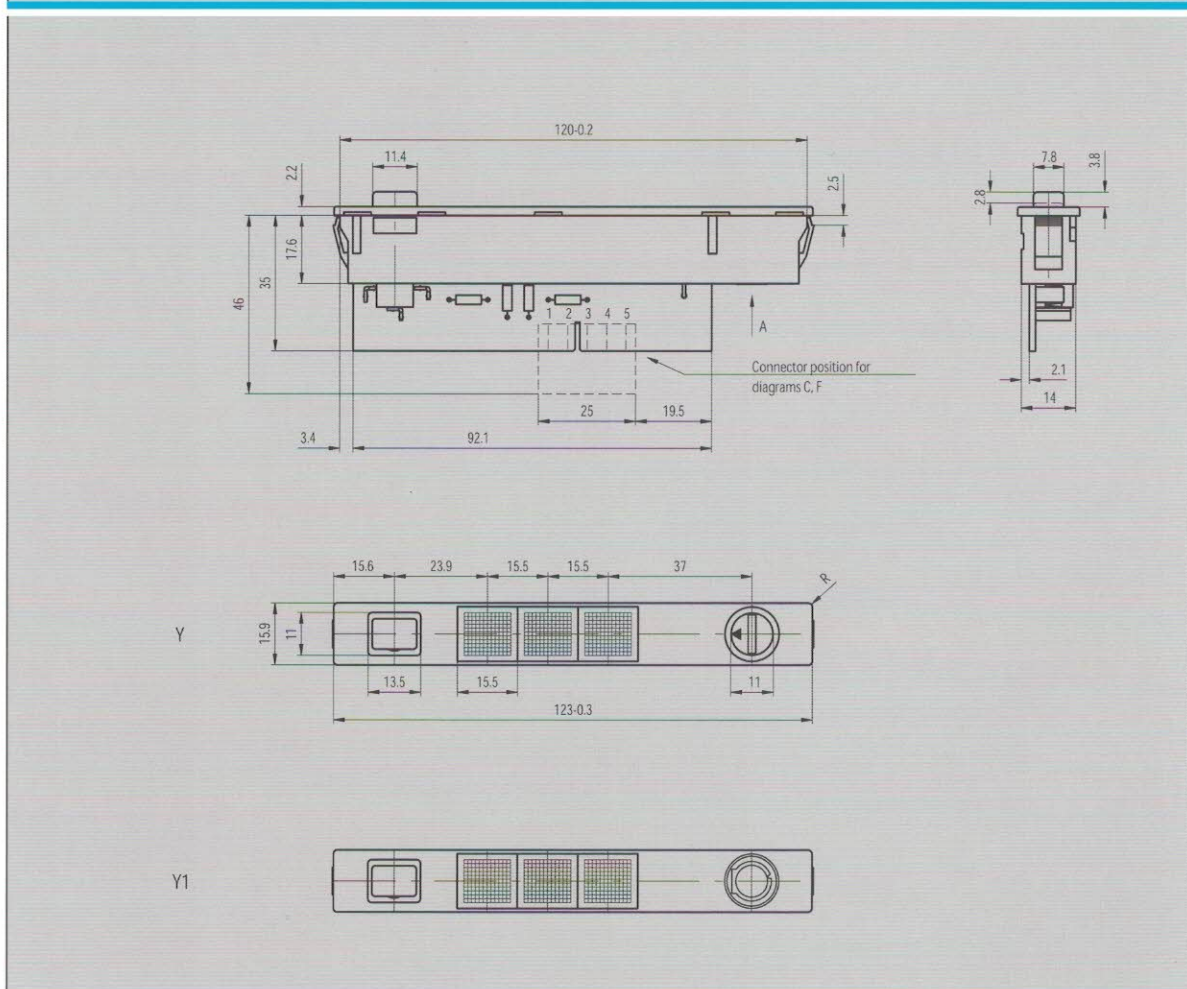
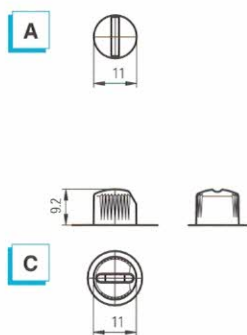
CUT OUT FOR FIXING

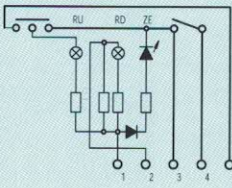
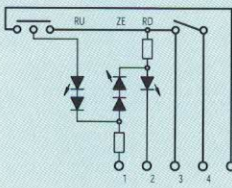
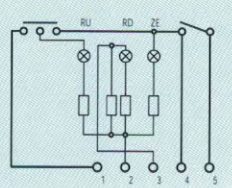
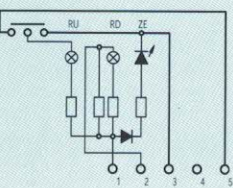
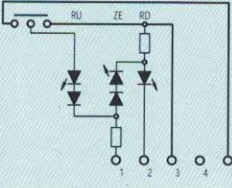
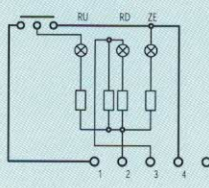


PUSH BUTTON FORMS



ON-OFF BUTTON FORMS

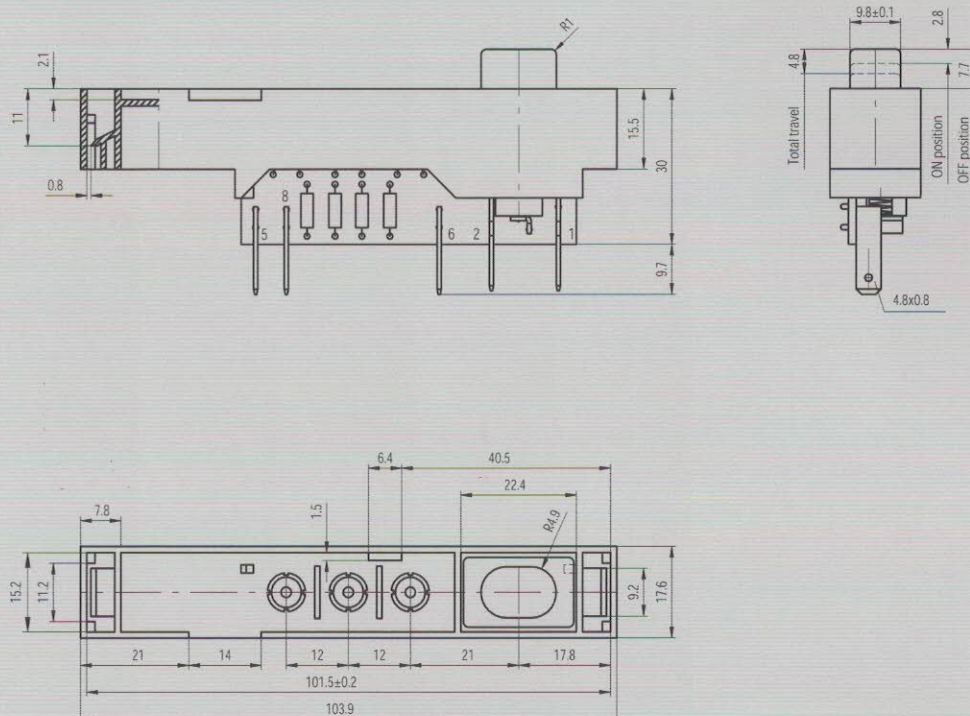


TECHNICAL DATA	3 - 4 3 - 5 $2(2) / 250 \sim \mu$		LIFE ENDURANCE SWITCH 3 - 5: 3000 CYCLES SWITCH 3 - 4: 300 CYCLES		LAMPS LIFE ENDURANCE RED NEON LAMP: 15000 HOURS YELLOW NEON LAMP: 15000 HOURS GREEN FLUO LAMP: 40000 HOURS		
CIRCUIT DIAGRAM	RU YELLOW SIGNAL LAMP RD RED SIGNAL LAMP ZE GREEN SIGNAL LAMP SIGNAL LAMPS: DIAGRAM A, D: RU, RD ... GLOW LAMPS ZE ... LED DIAGRAM B, E: RU, RD, ZE ... LED DIAGRAM C, F: RU, RD, ZE ... GLOW LAMPS						
			A	B	C	D	
							
			E	F			
FORM OF SET	WITH PLASTIC FRAME		WITHOUT PLASTIC FRAME				
	A, A1		Y, Y1				
COLOUR OF PLASTIC FRAME	WHITE	BLACK	OTHER				
COLOUR OF BUTTONS	WHITE	BLACK	OTHER				
PRINTINGS	ON REQUEST						
COLOUR OF PRINTINGS	WHITE	BLACK	RED	YELLOW			

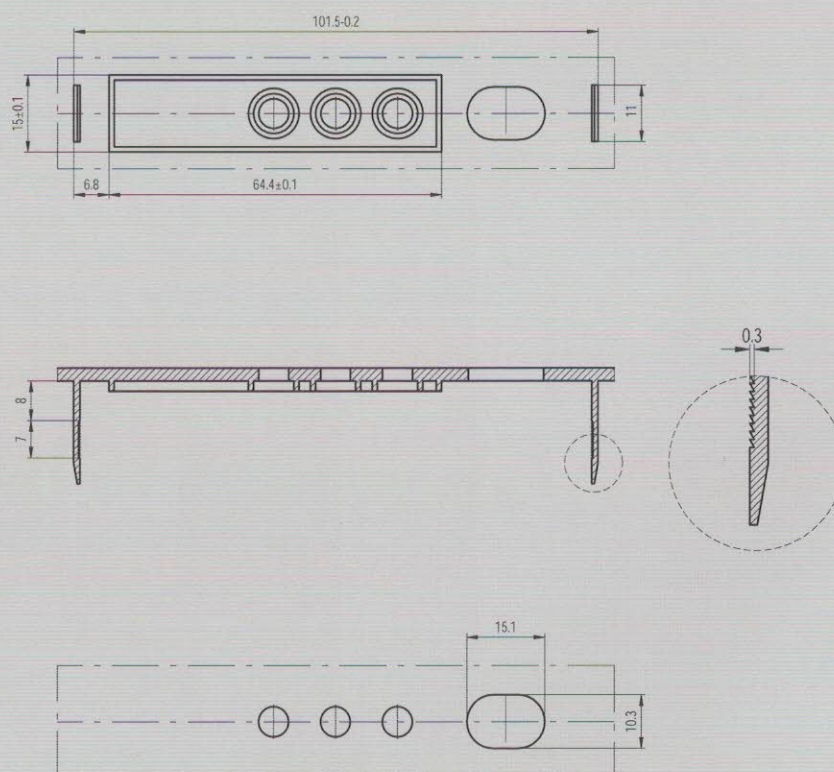
APPROVALS: IMQ

ORDER DATA:

- Circuit diagram
- Colour of housing
- Form and colour of buttons
- Printings if any
- Colour of printings
- Annual consume



RECOMMENDED VIEW OF FRONT PANEL



TECHNICAL DATA

1 - 2: 4(4) / 250 ~ μ	LIFE ENDURANCE SWITCH 1 - 2: 3000 CYCLES	LAMPS LIFE ENDURANCE RED NEON LAMP: 15.000 HOURS YELLOW NEON LAMP: 15.000 HOURS GREEN FLUO LAMP: 40.000 HOURS		

CIRCUIT DIAGRAM

RU YELLOW SIGNAL LAMP
RD RED SIGNAL LAMP
ZE GREEN SIGNAL LAMP

				
A				

COLOUR OF HOUSING

RED-BROWN	BLACK	OTHER							

COLOUR OF BUTTONS

WHITE	BLACK	OTHER							

PRINTINGS

ON REQUEST									

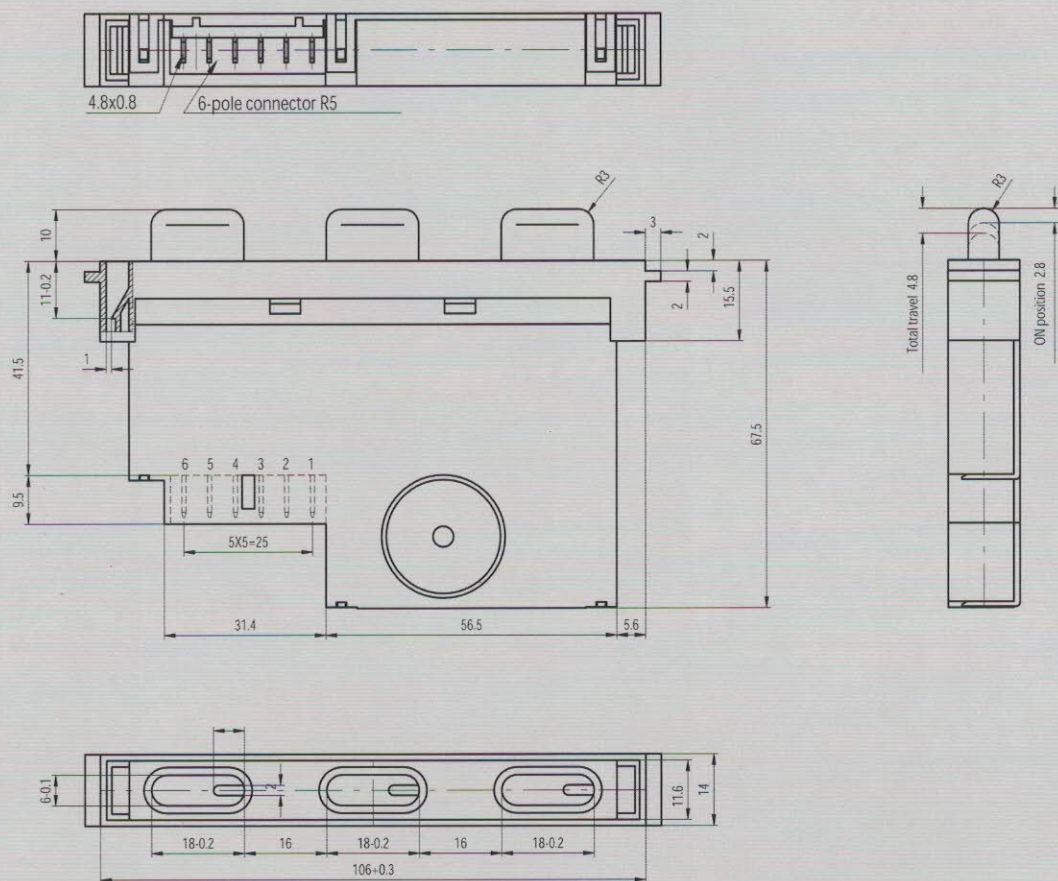
COLOUR OF PRINTINGS

WHITE	BLACK	RED	YELLOW						

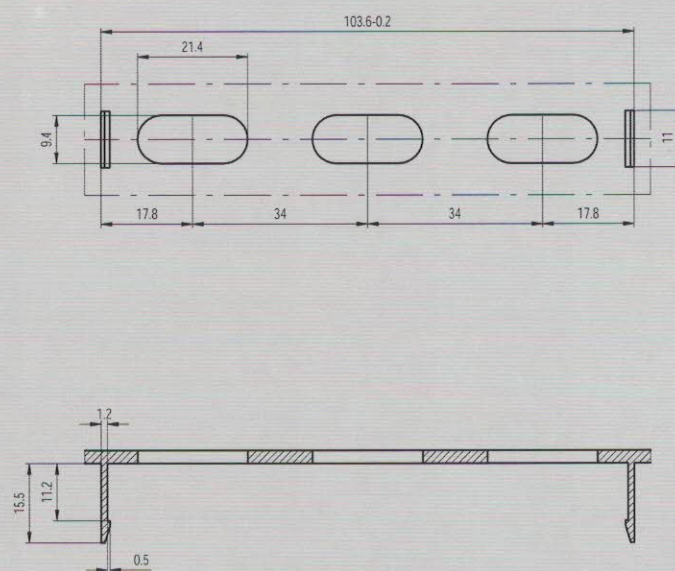
APPROVALS: VDE

ORDER DATA:

- Circuit diagram
- Colour of housing
- Colour of button
- Printings if any
- Colour of printings
- Annual consume



RECOMMENDED VIEW OF FRONT PANEL



TECHNICAL DATA

5 - 6: 3(3) / 250 ~ μ
2 - 5: 3(3) / 250 ~ μ
1 - 3: 0.01 / 250 ~ μ

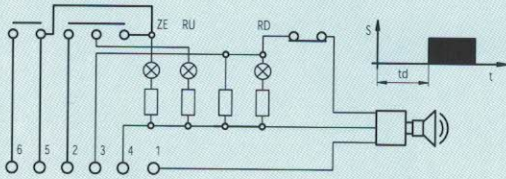
LIFE ENDURANCE
SWITCH 5 - 6: 3000 CYCLES
SWITCH 2 - 5: 10000 CYCLES
SWITCH 1 - 3: 10000 CYCLES

LAMPS LIFE ENDURANCE
RED NEON LAMP: 10000 HOURS
YELLOW NEON LAMP: 10000 HOURS
GREEN FLUO LAMP: 100000 HOURS

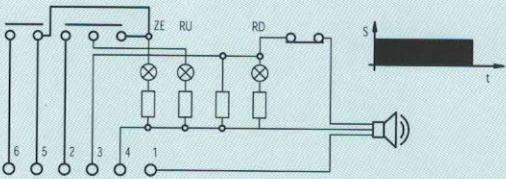
CIRCUIT DIAGRAM

RU YELLOW SIGNAL LAMP
RD RED SIGNAL LAMP
ZE GREEN SIGNAL LAMP

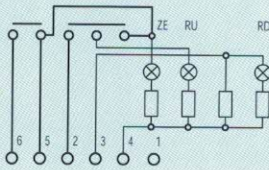
s ... sound
t ... time
td ... time delay



A



C



D

COLOUR OF BUTTONS

WHITE

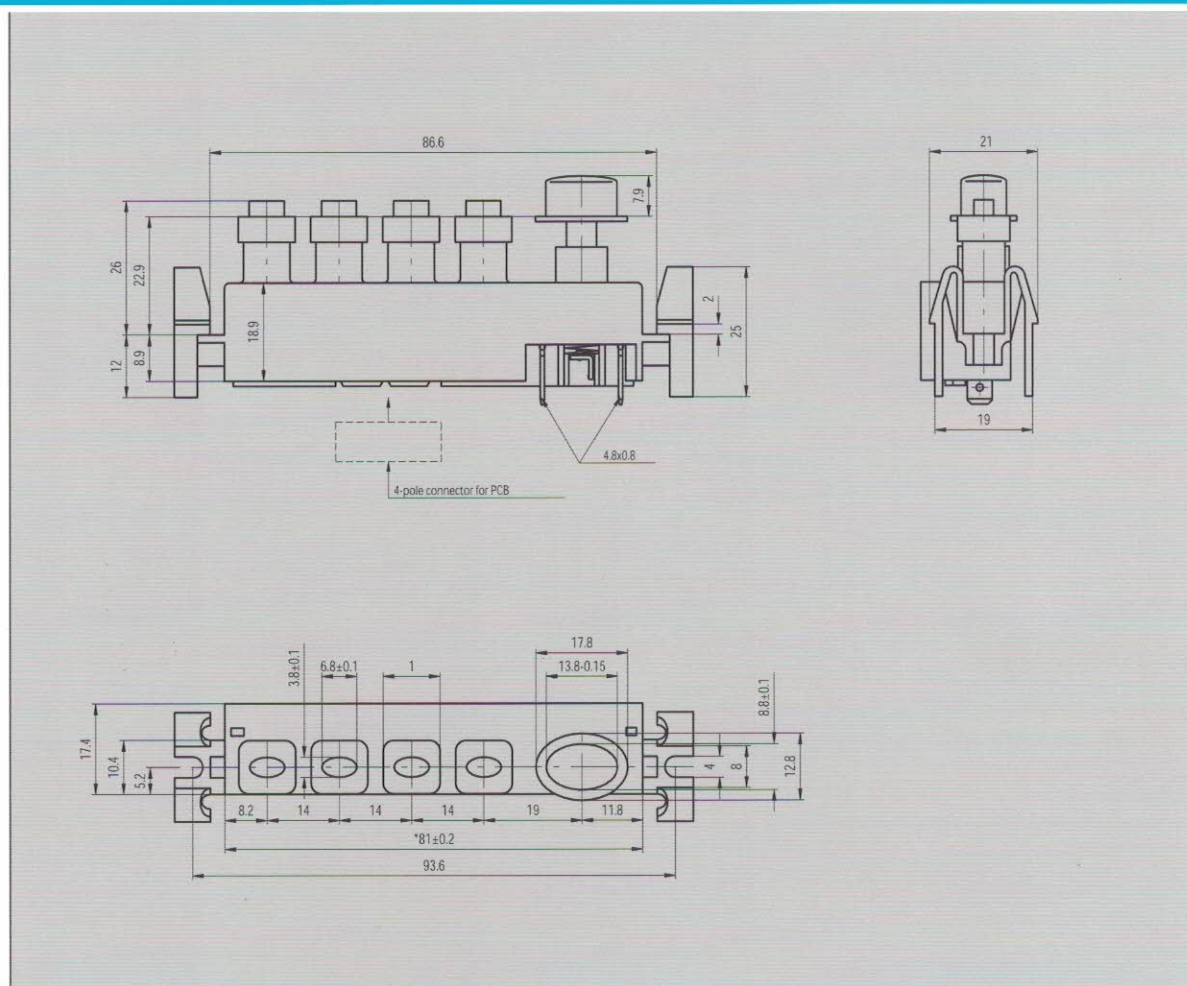
BLACK

OTHER

APPROVALS: ENEC

ORDER DATA:

- Circuit diagram
- Colour of button
- Annual consume

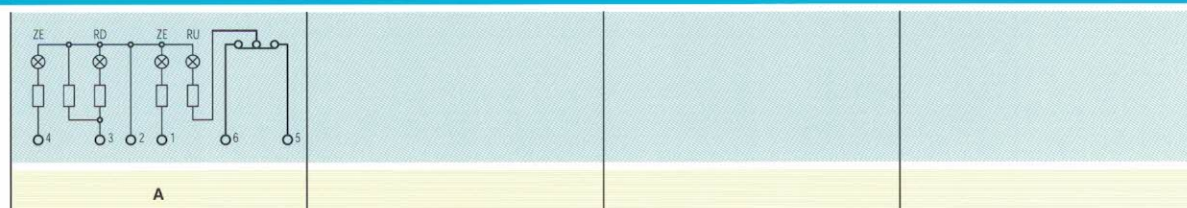


TECHNICAL DATA

5 - 6: 4(4) / 250 ~ μ	LIFE ENDURANCE SWITCH 5 - 6: 3000 CYCLES	LAMPS LIFE ENDURANCE RED NEON LAMP: 15.000 HOURS YELLOW NEON LAMP: 15.000 HOURS GREEN FLUO LAMP: 40.000 HOURS	

CIRCUIT DIAGRAM

RU YELLOW SIGNAL LAMP
RD RED SIGNAL LAMP
ZE GREEN SIGNAL LAMP



COLOUR OF BUTTONS

WHITE	BLACK	OTHER					

PRINTINGS

ON REQUEST							

COLOUR OF PRINTINGS

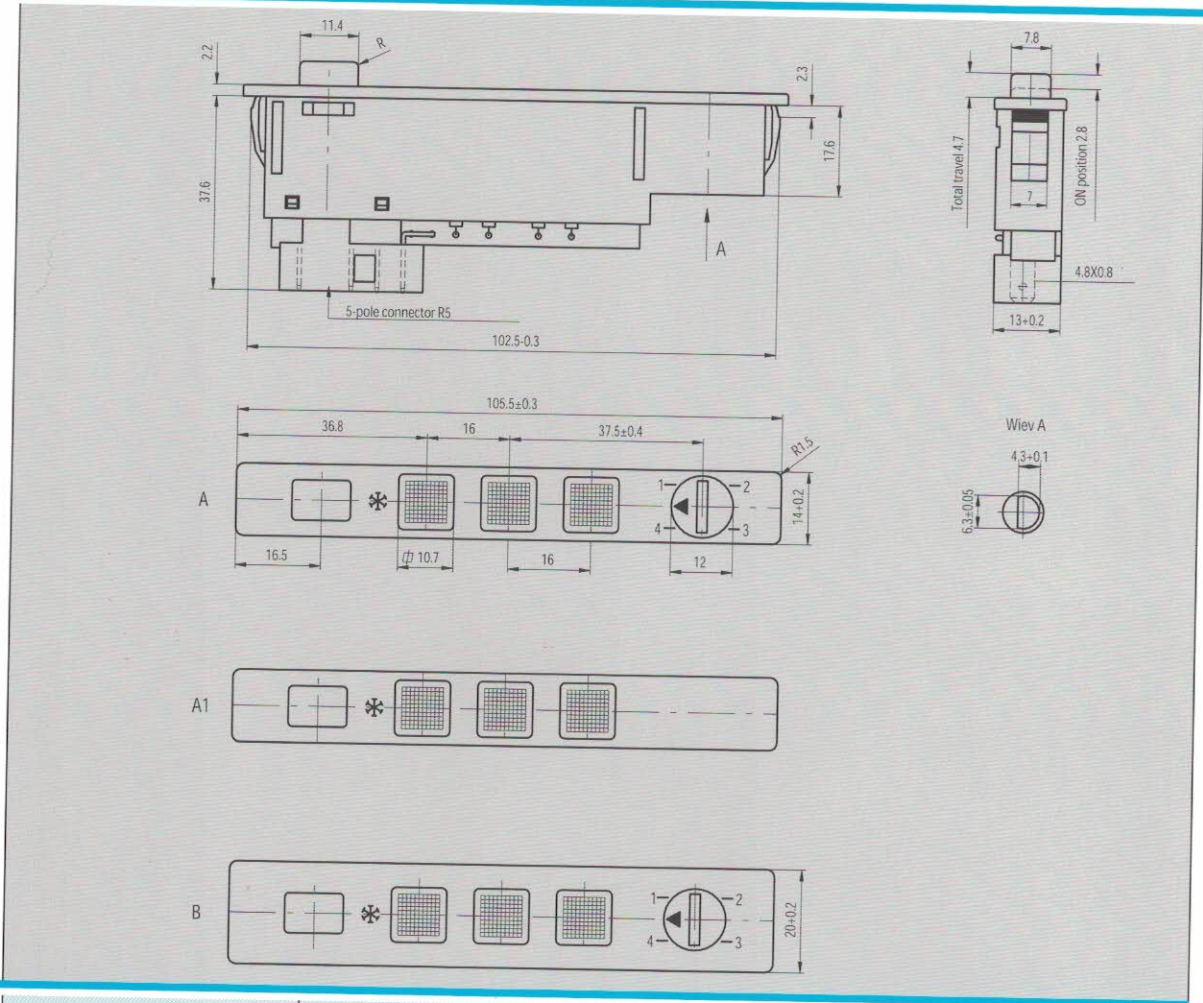
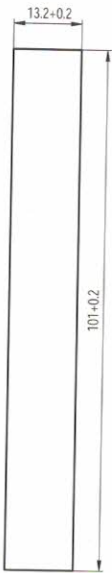
WHITE	BLACK	RED	YELLOW				

APPROVALS: VDE

ORDER DATA:

- Circuit diagram
- Colour of button
- Printings if any
- Colour of printings
- Annual consume

CUT OUT FOR FIXING



TECHNICAL DATA

3 - 6: 6(6) / 250 ~ μ	LIFE ENDURANCE SWITCH 3 - 6: 3000 CYCLES	LAMPS LIFE ENDURANCE RED NEON LAMP: 15.000 HOURS YELLOW NEON LAMP: 15.000 HOURS GREEN FLUO LAMP: 40.000 HOURS	

CIRCUIT DIAGRAM

RU YELLOW SIGNAL LAMP
RD RED SIGNAL LAMP
ZE GREEN SIGNAL LAMP

A			

COLOUR OF HOUSING

WHITE	BLACK	OTHER					

COLOUR OF BUTTONS

WHITE	BLACK	OTHER					

PRINTINGS

ON REQUEST							

COLOUR OF PRINTINGS

WHITE	BLACK	RED	YELLOW				

APPROVALS: VDE

ORDER DATA:

- Circuit diagram
- Colour of housing and button
- Printings if any
- Colour of printings
- Annual consume